



# Wadestown School

*Growing and Connecting as Learners*

## Rimu Team Newsletter Term 3 2023



### Kia ora Whānau and Parents

Nau mai haere mai, and welcome to Term 3 with the Rimu Team. We hope you all had an enjoyable holiday with your tamariki (children) and that the long Matariki weekend provided you with some quality time with your whānau (extended family). We welcome Xavier in Room 4 who has joined Wadestown School and our Rimu Team this term. Our Rimu tamariki are an enthusiastic, friendly and caring group of students. We, the kaiako (teachers), thoroughly enjoy working with them. We are in for a fun, yet busy term.

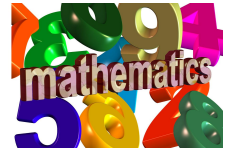
This is the third of our Rimu Team Newsletters for the year. The main purpose of these newsletters is to keep you informed of the organisation, expectations, key events and learning your child will be engaged in throughout Term 3.

### Curriculum Overview

#### Mathematics

We begin this term with a focus on multiplication and division. The students will learn and practise various strategies to help solve problems within the realm of whole numbers and decimals. Then, there will be a focus on geometry where they will explore symmetry, reflection, rotation, transformation and enlargement. Activities relating to fractions, proportions and ratios will follow.

The Wellington Mathematics Association organises an annual competition called 'Mathswell', where teams of six students are tasked with answering a selection of problem solving questions. The event is scheduled to take place on Thursday 31 August, at Wellington College. The Rimu Team will be entering a team of students to compete in the 2023 Mathswell Competition. Further details to follow.



#### Reading



To start the term, all students will be involved in guided reading lessons with their class teacher. The focus is on examining the setting, characters, plot and language features of stories they have read. Techniques for skimming and scanning text to find keywords or phrases will help them comprehend the content and messages within the story. Following this, the students will delve into the ever popular 'Novel Study' where they will choose a book to read independently. They will then complete reading responses that relate to the key events, characters and messages within each novel.

#### Writing

Writing will again be across all areas of the curriculum with a key focus on narrative writing. Links between reading and writing will be made explicit to assist students to transfer their reading knowledge into their writing. Through their writing, students will be working on their editing skills using a set criteria to critique their own writing. They will also do a series of drafts, and re-craft their writing following feedback from their peers and class teacher. A further focus on Poetry will use the students' Forest Lakes camp experiences for inspiration, after we return from camp.

#### Inquiry

As outlined in our Term 1 and 2 team newsletters, our school wide theme for 2023 is 'This is Us'. The Term 3 focus is 'The World Around Us.' This term, we will be integrating some aspects of the Arts Curriculum (dance, drama and music) with the focus theme being, 'Conflict - a positive or negative lens?' Students will participate in an Arts Rotation where they will experience lessons from each of the Rimu teachers and explore these areas in more depth. Be it interpreting a protest or conflict from around the world through drama, portraying conflict in a dance form or a song via music.



## Science Roadshow

In Week 10, we will be visiting the Science Roadshow which is a mobile science discovery centre. Annually it travels the length of New Zealand, bringing a range of cool interactive science and technology exhibits into the communities. The mission of the Science Roadshow is to support science education in New Zealand schools through science outreach. A visit to the Science Roadshow is a fun, exciting and interactive learning experience of science for children. It includes live shows and hands-on exhibits that broaden students' knowledge of science, technology, engineering and mathematics. Each year the shows' themes and exhibits change, so there is always something new for students to learn and engage with.

## Our School 'GROW' Values

The Rimu classes will continue their understanding by focusing on our school GROW values through the observation of other Rimu students who demonstrate a particular value in or outside the classroom. They can nominate them through our MVP (Most Valuable Person) box and in turn they go into a draw for a prize at our Rimu Assembly.



### Te Rēo Māori

Hemi Prime our wonderful Kapa Haka kaiako will be teaching all Rimu Team students Kapa Haka on Thursday mornings from 9.10 am to 9:40 am. This Thursday, several Rimu and Kōwhai students are performing in a Kapa Haka festival with all the 8 other schools in our Kāhui Ako (Community of Learning). They have been working very hard towards this over the last term. We wish them all the best for their performance!

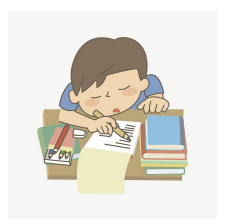
Every fortnight, the Rimu team will continue to participate in Te Reo lessons with Matua Alwyn. This is a school-wide initiative to promote and normalise Te Reo Māori in our classrooms. His lessons are also designed to support our kaiako with their Te Reo learning journey. Alwyn makes Te Reo fun and engaging with the students and kaiako alike and we always look forward to working with Matua Alwyn. This term's focus is on **Manaakitanga**; to understand the central importance of showing hospitality, kindness, generosity and support, and practise this important aspect of tikanga in the classroom.

## Physical Education

Each Wednesday, Thursday and Friday we will continue with class fitness sessions this term. Each Monday we will have combined Rimu Team fitness. However, this is all weather dependent. On Tuesday afternoons we have Rimu Sport where all the Rimu classes come together for PE skills. There will also be Year 7 students taking lessons with small groups of Rimu tamariki as part of their leadership programme. The Rimu students have a new opportunity to collaborate with the members of the Kilbirnie Recreation Centre. These experts will be visiting our school to engage our tamariki in a series of interactive cooperative learning games. This experience perfectly complements our upcoming camp preparations.

## Homework

Homework will continue to be via Google Classroom. A weekly homework outline will be given out on Monday and the students work their way through the tasks and complete these by Sunday. It will consist of teacher-set Mathematics tasks, 15-20 minutes daily reading, Te Reo phrases and basic facts. Please ensure your child turns in their homework on Google Classroom each Sunday. Book Bingo awards are available for children to work towards and gain valuable House points and Banquer dollars for each level they achieve. Students will still be using their homework book to practise their basic facts only this term. There will be no spelling this term as we are doing this in class through our Structured Literacy Programme (see below for more information). Homework is designed to be flexible and allows each student to manage and organise their time around after school commitments. Homework guidelines went home last Monday in your child's homework book.



## Structured Literacy

Structured Literacy focuses on how we teach students to read, write and spell. Through this approach teachers are explicitly, systematically and cumulatively teaching: Phonemic Awareness, Orthography (the spelling system), Morphology, Vocabulary, Syntax and Grammar, to give our learners the skills they need to read, spell and write with confidence. Across the school this term, we are introducing a Structured Literacy approach called 'The Code' which was developed by Liz Kane. This is an evidence-based approach that we feel better supports students' individualised needs.

From Term 3, we will be teaching daily lessons using 'The Code.' These lessons focus on a particular sound and any associated spelling rule with it. Students will not be taking spelling words home, as the daily work on 'The Code', will replace daily learning of spelling words at home.

## ICT in the Classroom - a friendly reminder

Gmail accounts: All students have their own email address that is linked to the class kaiako. Students are monitored regularly. If a student has used their school email account inappropriately (i.e. adult-type content) they will be red flagged and senior management and their class teacher are notified. It would be greatly appreciated by the Rimu kaiako if you can have a chat with your child to remind them about appropriate searching while using their school email account and how it is used for school purposes only. Here is an excellent resource from Netsafe for whānau supporting their family to stay safe in the online world: [Online Safety Parent Toolkit](#). We encourage parents to view this website.



## E-Pro8 Challenge

The Rimu team is participating in a week-long STEAM programme. Each class is divided up into groups and given time to complete set tasks which integrate science, technology, engineering, arts and mathematics. Each group is given a brief then constructs an apparatus using the equipment provided. The Rimu team are all looking forward to a week of fun, yet challenging activities. In Week 1, next term, two teams of four Year 5 and 6 tamariki will participate in an inter-school EPro8 Challenge at South Wellington Intermediate. In previous years, our Wadestown School Year 5 and 6 students have taken part in this and have thoroughly enjoyed it.



## Forest Lakes Camp 2023

Our Rimu tamariki are getting very excited about our Year 5 and 6 camp to Forest Lakes in seven weeks time. Camp is such a highlight for our students and they come back buzzing from their positive experience! More information will follow shortly about the programme, the student Google form update on medical information and other administration. A final notice will be sent out with reminders a week prior to our departure.

## Communication with Teachers

If you have anything you wish to discuss with your child's classroom kaiako, please feel free to make contact via email and we can arrange to meet in person or chat on the phone.

To ensure an urgent message gets to your child please do this through the school office, not the class teacher's email, as there is very little opportunity to clear emails during the school day.

Amy Maddock (Room 4, Team Leader) - [amy@wadetown.school.nz](mailto:amy@wadetown.school.nz)

Clare Gilligan (Room 5) - [clare@wadestown.school.nz](mailto:clare@wadestown.school.nz)

Kate Dammer (Room 6) - [kate@wadestown.school.nz](mailto:kate@wadestown.school.nz)

## Useful Reminders

- **Classrooms are open from 8:30 am.** Children should not be at school before 8:30 am. Arrival time between 8:30 am and 8:45 am ensures they have enough time to organise their belongings and be ready for the 8:55 am bell. Students who arrive later than this bell must sign in at the office.
- Students are to bring a **water bottle** to school **each day**, so they can keep hydrated throughout the day.
- **Cell phones** are the students' responsibility and remain in their school bag throughout the day unless specific permission has been given by a teacher. Please be aware that we cannot be responsible for lost or damaged cell phones and that we recommend these are only at school, if there is a need to communicate with family, before or after school.
- Please make sure all items of **school uniform are clearly named**. Without this lost items are unlikely to be returned to the owner. The children are responsible for all their items of clothing and stationery, including the retrieval of lost pieces.
- Check regularly that **your child has the required stationery**, so that they are prepared and organised for their learning at school.
- Students bringing **scooters** to school need to **remember their helmets and licence**. New licences can be obtained through the office.
- Year 6 students doing **Road Patrol** are expected to arrive at school at 8:15 am to set up for their duty. For the safety of all, please contact the school office if your child is unable to carry out their duty.

All the Rimu kaiako are again looking forward to working with you and your whānau this term.

Nāku iti noa, nā

Amy Maddock (Team Leader), Clare Gilligan and Kate Dammer

Rimu Team Kaiako

<b>Rimu Classroom Activity Donation 2023</b>	
Amount charged to Student Statement for 2023	\$100.00
<b>Less:</b>	
<b>Term 1 Costs</b>	\$6.00
<b>Term 2 Costs</b>	\$7.00
<b>Term 3 Costs</b>	
Science RoadShow (Bus and entry fee)	\$15.50
Trip to Wellington Museum (Bus and entry fee)	\$13.00
Kilbirnie Rec Centre Cooperative Games (per student)	\$3.00
EPro8 Technology Challenge (per student)	\$12.50
<b>Activity Fee Total Spend to date</b>	<b>\$57.00</b>

Below: *Images from our recent Zero Waste lessons with Lorraine from Wellington City Council. We are encouraging our students to take her recycling messages to their households. Ask your child about what they learned.*



Above: *Wazzie Bear Silent Reading with Room 4*

Below: *Learning how to manage our pocket money during Financial Literacy lessons.*

