



Wadestown School

Board of Trustees

Steve Allen
Sally Barrett
Carolyn Coldstream
Julie Gerrard
Hamish Leslie
Jo Moyer
Neil Paviour-Smith

News from the Board – May 2011

This newsletter from the Board contains an update on some significant items of interest to the school community.

1. New Classrooms

Two new classrooms to be built

As indicated in previous news from the Board, the Ministry of Education confirmed funding late last year for two new classrooms to reflect projected roll growth at the school. In conjunction with this the school was required to introduce an enrolment scheme (zoning).

Since then the Board has moved at a rapid pace to conclude plans for these two new classrooms, considering such matters as to their location, operational/teaching issues and the range of prescribed requirements from the Ministry.

I am pleased to advise that following recent tenders, the Board resolved at its meeting on Monday night to proceed with the construction of a new classroom at the side school (approximately in the position currently occupied by the small playhouse/bark chips) and a new classroom at the main school (adjoining the two current classrooms down next to the tennis courts).

An indicative artist's impression/plan layout is attached so that you can see an indication of where these classrooms are to be constructed.

We are finalising contractual matters with the preferred contractor.

It is expected that construction will commence on Tuesday 7 June. This is very soon but is strongly desired as it means the new classrooms will be available for use as soon as possible (expected to be complete around mid term 3 ie some time August).

As you would expect the Board will be ensuring the contractor adheres strictly to matters such as onsite safety, access issues etc.

This is a very exciting development for the school!

Operational issues

School management will be attending to the day to day consequences of the construction of the classrooms. For a short time period, children currently in rooms 13 and 14 will be relocated into the school hall, which has been used very effectively on previous occasions for teaching purposes.

We appreciate there will be some disruption throughout the school during this construction timeframe but are confident that this can be managed effectively.

Please note new classrooms do not mean new teachers. The number of teachers funded by the Ministry is determined by the school roll.

Side school

The Board wishes to make a particular note to the school community about the fact of a new classroom at the side school.

We have received much feedback from parents about their views around side school tenure, especially the desire for children to have more time at the side school and less classroom change disruption.

From an operational perspective, school management acknowledged the advantages in constructing a new classroom at the side school.

Obviously constructing on two sites is more expensive than constructing two classrooms on one site. So we are very pleased that in working with the architect we have been able to make choices in such a way as to achieve a new classroom at the side school.

2. Main School Upgrade

The Board has previously stated that its priority with regard to (existing) property and the general school environment is modernisation of the main school.

The Board receives capital funding from the Ministry every 5 years (such funds can ONLY be spent on existing buildings with maintenance and safety the priorities).

One of the consequences of upgrading the side school buildings two years ago is that it consumed virtually all of the previously availed funds. As a result there has been no money available to invest in the existing main school stock.

The Board is well aware of the tired state of much of the main school.

Following a recent property audit (Ministry requirement) the Board has prioritised many items for upgrade at the main school.

I am pleased to advise that Ministry funding advice suggests that most, if not all, of the items listed by the Board for attention will be able to be addressed.

Our current priority is the new classroom developments. But over the balance of the year the Board will be planning the main school upgrade works with the summer break being the most likely time for the bulk of this work to be undertaken if possible. We will keep you informed about what to expect.

3. Classroom Technology

As a consequence of the new classroom developments and pending certainty around this, decisions to acquire new technology were held off.

I am pleased to advise that at Monday's Board meeting, the Board resolved to acquire new technology as follows:

- 20 new laptops and mobile trolley ("COWs": computers on wheels) for use throughout the main school
- 2 interactive whiteboards
- 4 electronic/interactive data projectors (essentially similar to interactive whiteboards)

This is an investment of over \$40,000 and is only possible due to the fundraising success of the Parents Association and their generous donation of funds to the school.

The Board previously made a commitment to ensure that donations received from fundraising activities of the PTA would be used to support technology upgrading in the school.

We hope to make further investments in the future once this technology is installed and operational.

To everyone who has helped raise funds to donate to the school, another thank you. You should be proud of your efforts and the benefits that will follow in the classrooms.

4. School Uniform

In February news from the Board, we indicated the Board was establishing a Uniform Committee of interested parents to work on matters to do with the introduction of uniform to the school. 18 parents volunteered and have been working hard in recent weeks as the Committee to a brief provided by the Board regarding matters such as style, colours, design, supply arrangements, cost/quality and so on.

The Committee is working to a timeframe whereby at the end of term 3 decisions about the uniform will have been made and for purchasing to be available in term 4 ahead of the introduction in 2012.

Further information regarding uniform will be provided to parents by the Committee as their work continues. Jennie Johnstone and Philippa Williams are co-chairing the Committee and are the points of contact.

5. Donations

The Board wishes to encourage everyone to pay their requested school donation.

Unfortunately the decile-based funding applied by the Ministry does not cover all of the costs of operating Wadestown School. Operational grants are only sufficient to cover the bare essentials. Donations provide approximately 20% of the school's operational revenues.

Without these, the Board would be required to slash many of the things that are provided and are taken for granted as part of the school. Further the Board funds a part-time librarian, teacher aides and other support teachers to enable programs to be offered to children. Funding is provided for professional development of teachers. In the absence of receiving donations from parents, these and other areas will progressively be cut from the budget.

The Board cannot spend money from the Ministry for capital items and buildings on operations. Further the Board has said it will not spend fundraising monies donated to the school on school operations.

So I want to make it very clear that whilst money for new buildings from the Ministry, 5 year capital funding from the Ministry for existing buildings and funds invested in to new technology arising from fundraising activities may give the appearance of the School being suddenly flush with cash, do not be mistaken.

Our costs continue to rise. The Board has held donation request levels unchanged for several years and has been careful about what these precious operational funds are spent on. A consequence of acquiring new technology is that in the future the items will need replacement. We cannot just assume fundraising donations will be continuous. So the depreciation cost comes in to the school's budget. The school's budget is tight and it remains vitally important that the school receives your support for donation income.

We are not seeking luxuries but are determined to maintain high achievement standards. Less than 100% support means donations asked of others need to increase or programs/initiatives chopped.

Please pay your requested (tax deductible) donation or contact the school office in confidence to make another payment arrangement.

6. Board communications

The Board wishes to remind parents that should you be moved to correspond with the Board on a matter, our email and other contact details are available in the school directory or from the office.

We will undertake to respond to your queries but if they are of an operational or school management nature, the response is most likely to come from the Principal.

Board of Trustee meetings are public meetings and parents are welcome to attend. There are protocols around addressing the meeting which can be clarified upon request.

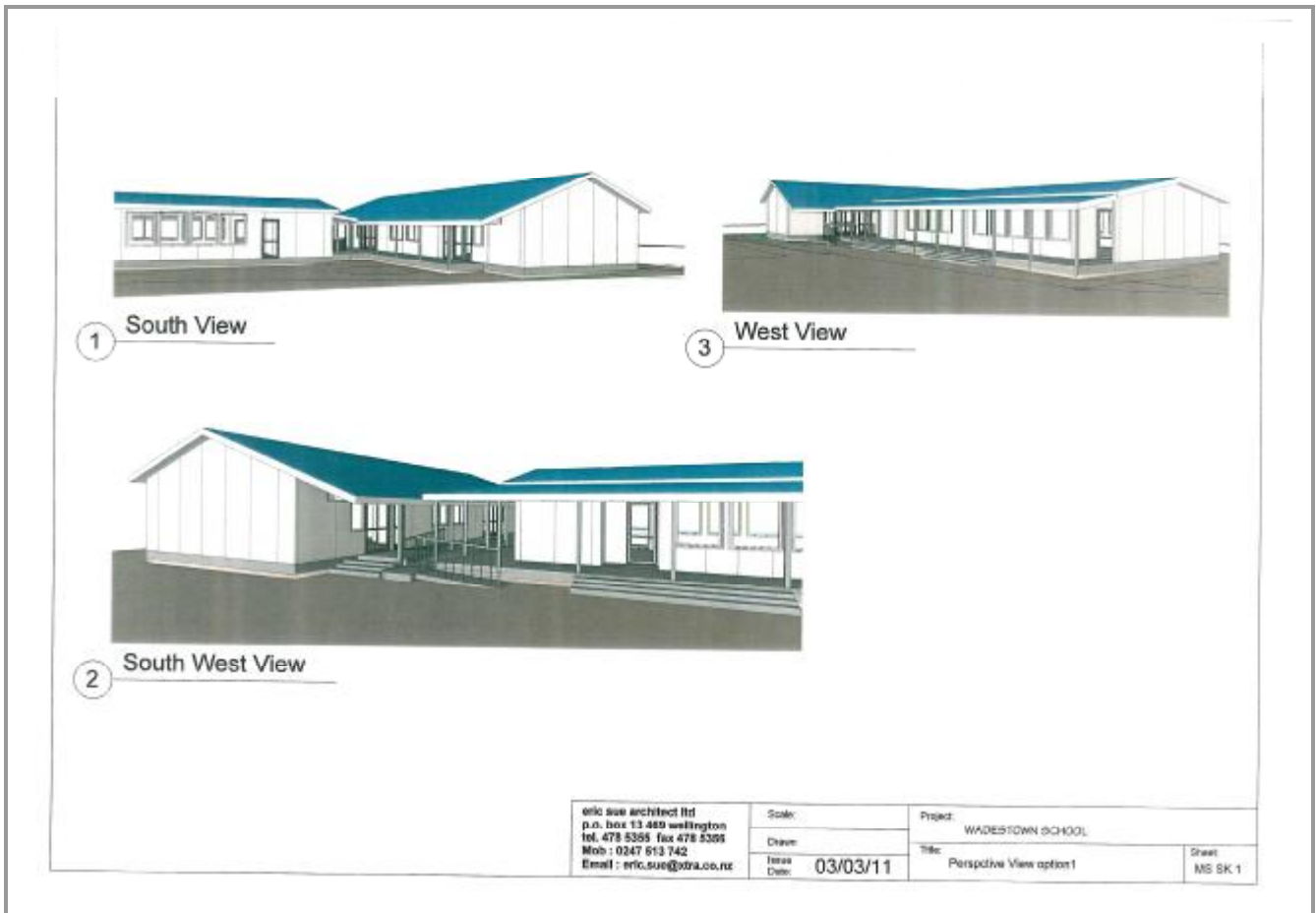
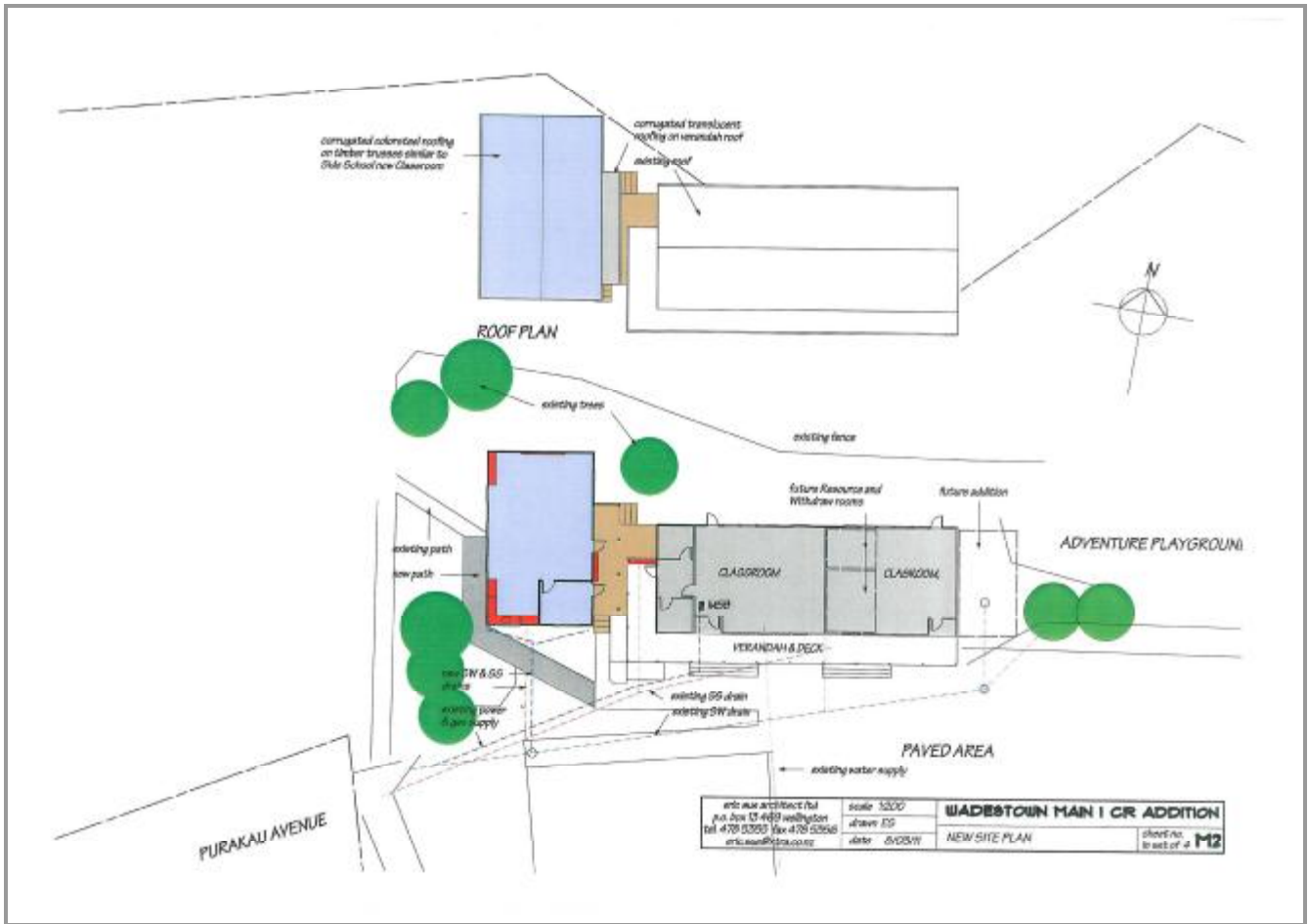
7. The end

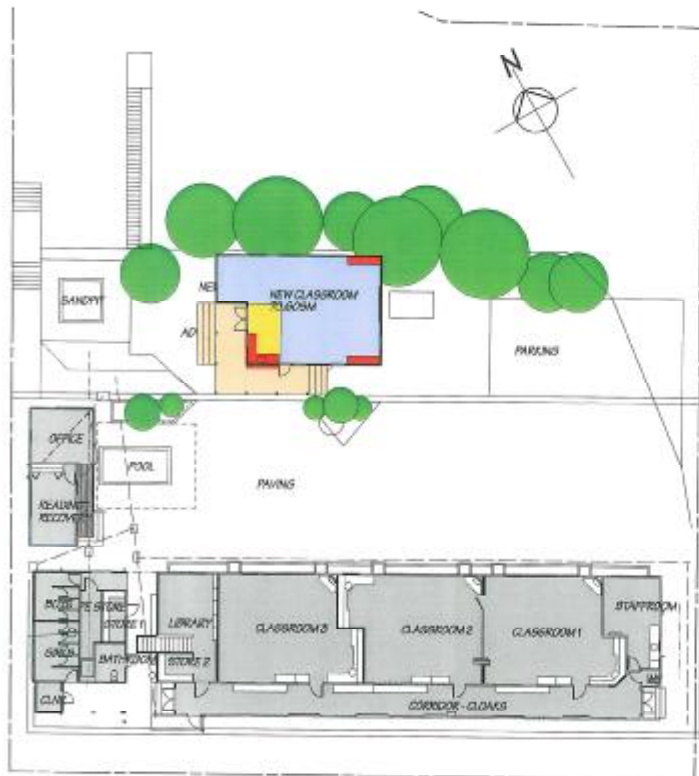
Thanks for reading this latest news. We hope you find it informative.

Kind regards



Neil Paviour-Smith
Chairman





WELD STREET

SITE PLAN
scale 1:200

arkus architects ltd pvt ltd 15-469 wellington tel: 478 5266 fax: 478 0266 arkus@arkus.co.nz	scale as shown sheet E5 date 5/8/11	WADESTOWN 2CR ADDITION 85- CONCEPT SITE & FLOOR PLAN	sheet no. 3 trees of 3
---	---	--	------------------------------

